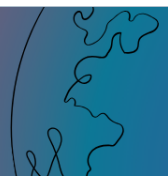




BMS AUTOMATION PROTOCOL CONVERTERS

DDBPC SERIES



SYNOPSIS

- DDBPC ARE EXTERNAL BUILDING AND INDUSTRIAL AUTOMATION MULTI- PROTOCOL DEVICE SERVERS FOR OEMS WANTING TO PROVIDE PROTOCOL TRANSLATION BETWEEN SERIAL-SERIAL, SERIAL-ETHERNET AND ETHERNET- ETHERNET DEVICES USING LON WORKS®, BACNET, METASYSN2, MODBUS AND MORE.
- THE CONVERTER INCLUDES ALL THE HARDWARE AND SOFTWARE TO ENABLE THE CUSTOMER'S PRODUCTS TO INTERFACE TO VARIOUS NETWORKS. EACH BACNET
- CONVERTER IS PROVIDED WITH THE NECESSARY PROTOCOL DRIVERS. MULTIPLE DRIVERS CAN BE INSTALLED ON A SINGLE CONVERTER.

FEATURES & BENEFITS

- USE OF FIELD SERVER BTL APPROVED MODULES
- THE MOST FLEXIBLE AND VERSATILE MULTI-PROTOCOL DEVICE SERVER IN THE MARKET.
- SUPPORTS VIRTUAL NODES ALLOWING MULTIPLE OEM CONTROLLERS TO CONNECT TO A SINGLE CONVERTER AND SEEN AS SEPARATE CONTROLLERS ON THE VARIOUS FIELD NETWORKS.
- TRUE PROTOCOL TRANSLATION AND NOT PROTOCOL PACKET ENCAPSULATION.
- MULTI-CLIENT AND MULTI-SERVER SUPPORT ENSURES INTEROPERABILITY BETWEEN ANY INDUSTRIAL AND OR BUILDING AUTOMATION PROTOCOLS.
- FLASH UPGRADEABLE.
- CONFIGURATION IS DONE USING A '.CSV' FILE.
- SUPPORT HTTPS AND DHCP CLIENT
- BACNET DATA TYPES SUPPORTED: AI, AV, AO, BI, BV, BO, MI, MV, MO, LSP, DEVICE

SPECIFICATIONS

Serial Port	1 x RS485, 2Wire / 4 wire, 5 pin in DDBPC 01, DDBPC 02 and DDBPC 05
Serial Port	1 x RS485, 2Wire in DDBPC 01 01 and DDBPC 02 02 3 Pin screw type terminal
Ethernet Port	1 x 10/100 Ethernet port
Connector	RJ45
Indications	LEDs for Tx, Rx, Power
Power	24V AC/DC, Range 18 to 72V DC. 100mA@24V DC. Range ± 10% for 24V AC Connector: 3 Pin Screw Type
Enclosure Dimensions	46 x 70 x 111mm (L x W x H), DDBPC 01, 02 & 05 46.5 x 84.5 x 106.5mm, DDBPC 01-02, R 02-02 and 04 50 x 101 x 105 mm (DDBPC 03)
Mounting	Din Rail



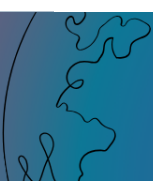
SUPPORTING PROTOCOLS

RS485	Ethernet (10/100Base-T)
Modbus RTU	Allen Bradley Ethernet IP
Allen Bradley DF1	BACnet IP
BACnet MSTP	BACnet Ethernet
Metasys N2	Modbus TCP/IP, SNMP, XML
LON	DNP3 Ethernet

ORDERING INFORMATION

Model	Protocol	Protocol
DDBPC MOD BIP 01	Modbus RTU	BACnet IP
DDBPC MOD BIP 02	Modbus RTU 2*RS485 Ports	BACnet IP
DDBPC BMTP BIP 01	BACnet MSTP	BACnet IP/ Modbus TCP / Ethernet IP
DDBPC BMTP BIP 02	BACnet MSTP 2*RS485 ports	BACnet IP / Modbus TCP
DDBPC DNP3 MOD 05	DNP3	Modbus
DDBPC R 02	BACnet MSTP (Router)	BACnet IP (Router)

DATA BRIDGE
D Y N A M I C



NOTES

- 32 DEVICES CAN BE MULTI DROPPED ON THE MODBUS RTU/BACNET MSTP/N2SIDE.
- DEPENDING ON SITE CONDITIONS THIS FIGURE MAY INCREASE OR DECREASE.
- 485 REPEATER MAY HAVE TO BE USED IN BETWEEN THE 485 CHAIN TO MEET BASIC 485 CRITERIA.
- MAX1200 POINTS ARE SUPPORTED IN DDBPC 01, DDBPC 02 AND DDBPC 05.
- DEFAULT 1500 POINTS ARE SUPPORTED IN DDBPC R 02-02, DDBPC 04.
- THE POINT COUNT CAN BE UPGRADED TO 5000 AND 10000 RESPECTIVELY AT ADDITIONAL COST.
- DEFAULT 1500 POINTS ARE SUPPORTED IN DDBPC 03. THE POINT COUNT CAN BE UPGRADED TO 4096.
- CONFIGURATION THROUGH WEB BROWSER IS SUPPORTED IN DDBPC 01-02, DDBPC R 02-02 AND DDBPC 04

